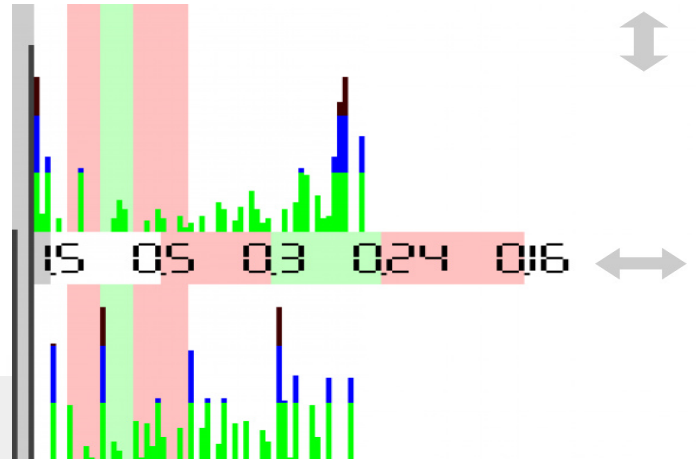
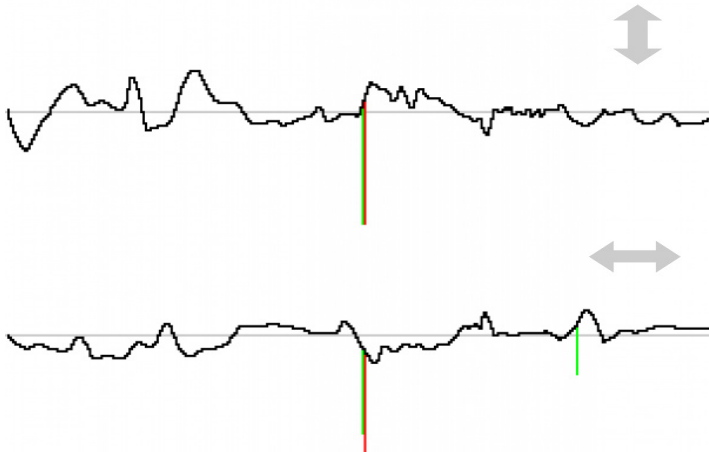
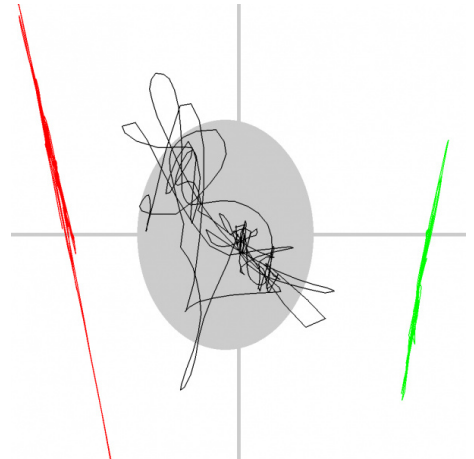
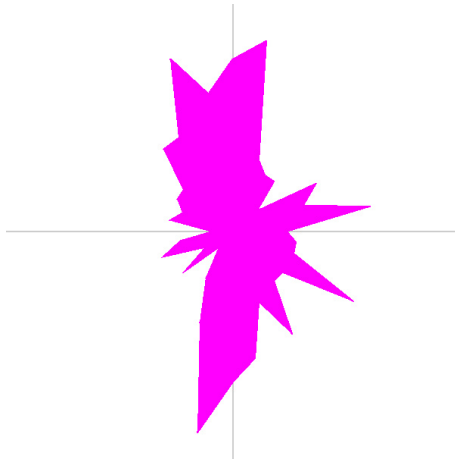
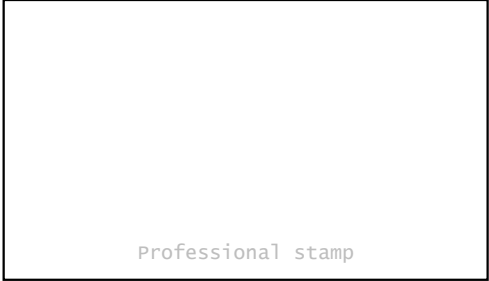




Name _____

Measurement 2016-10-17 18:24

EO - eyes open



STATIC ANALYSIS

	Left	Right
Forefoot	41% (22)	9% (22)
Backfoot	14% (28)	36% (28)
Lateral side	55% (50)	45% (50)
	Front	Back
Front side	50% (44)	50% (56)

DYNAMIC ANALYSIS

	Lateral side	Front side
Mean COP	-1.18 mm	0 mm
Standard deviation	3.87 mm	5.04 mm
Twist	270° (180°)	
Mean speed	3.65 mm/sec	
Area	66.35 cm ² (EO<210, EC<638)	