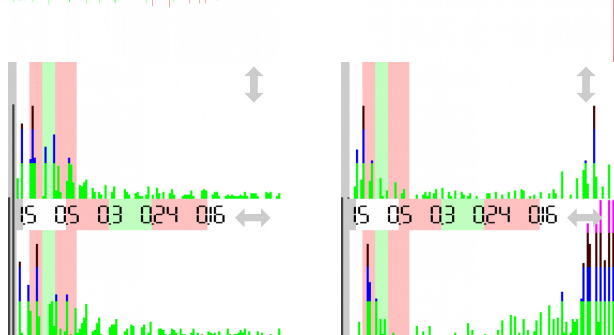
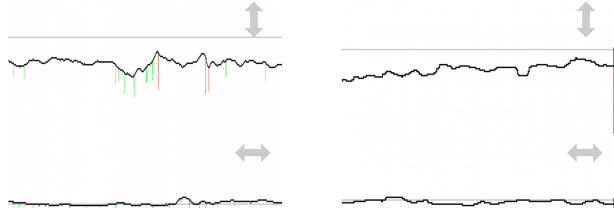
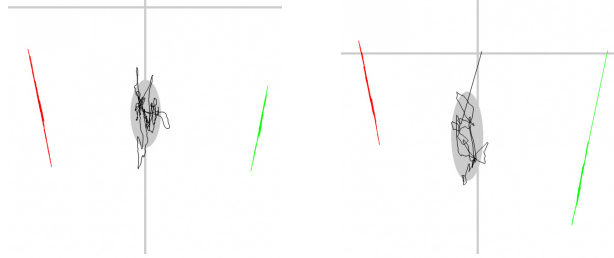
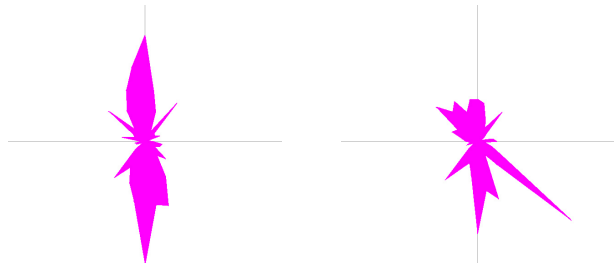
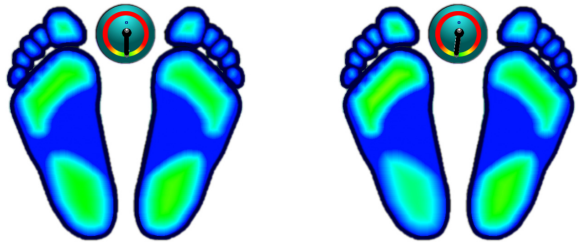


GRAPHICS



Name _____
 Measurement 2016-10-17 00:00
 EO - eyes open
 Measurement 2017-02-12 22:16
 EO - eyes open

Professional stamp

STATIC ANALYSIS

	Left	Right
Forefoot	21% < 24% (22)	20% > 19% (22)
Backfoot	29% > 27% (28)	30% = 30% (28)
Lateral side	50% < 51% (50)	50% > 49% (50)
	Front	Back
Front side	41% < 43% (50)	59% > 57% (50)

DYNAMIC ANALYSIS

	Lateral side	Front side
Mean COP	0.05 > -1.53 cm	-15.46 < -12.06 cm
Standard deviation	1.11 < 1.16 cm	2.46 < 3.24 cm
Twist	179.00 < 187.00	° (180°)
Mean speed	0.47 > 0.35	cm/sec
Area	9.34 < 12.86	mm ² (EO<210, EC<638)
Romberg index	72%	(>100%)

Measurement 2016-10-17 00:00

cellulare in mano

Measurement 2017-02-12 22:16